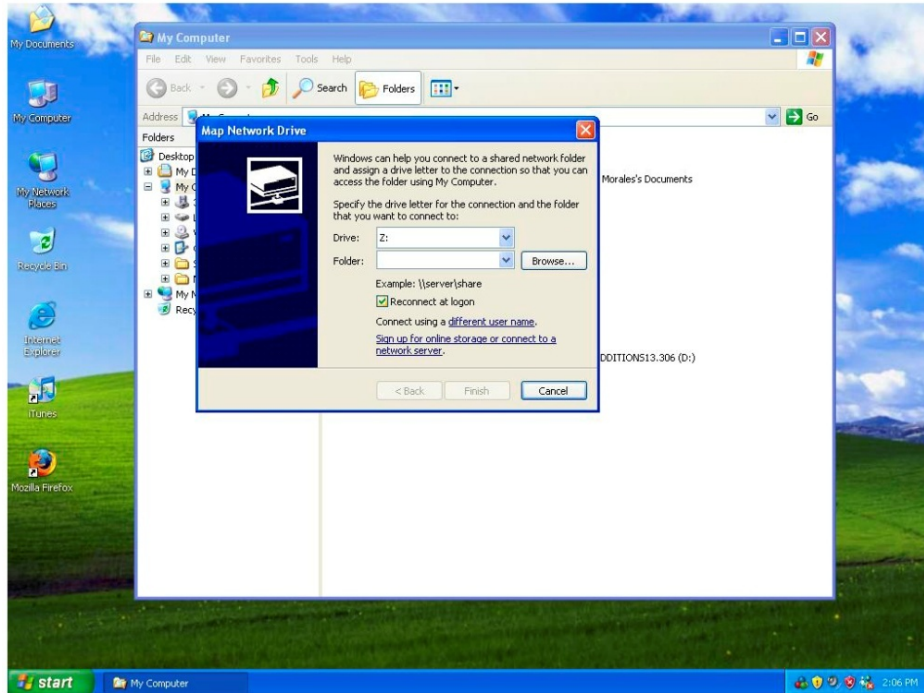


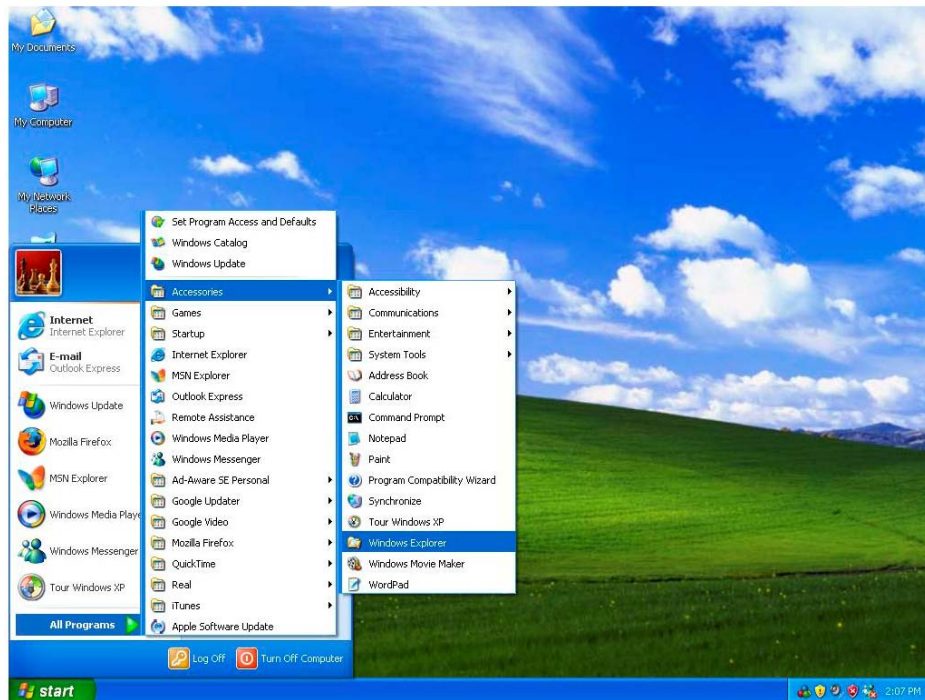


3. In the Drive box, click a drive letter.
4. In the Folder box, type the UNC path for the server and shared resource in the following format: \\server name\share name. You can also click Browse to find the computer and shared resource.

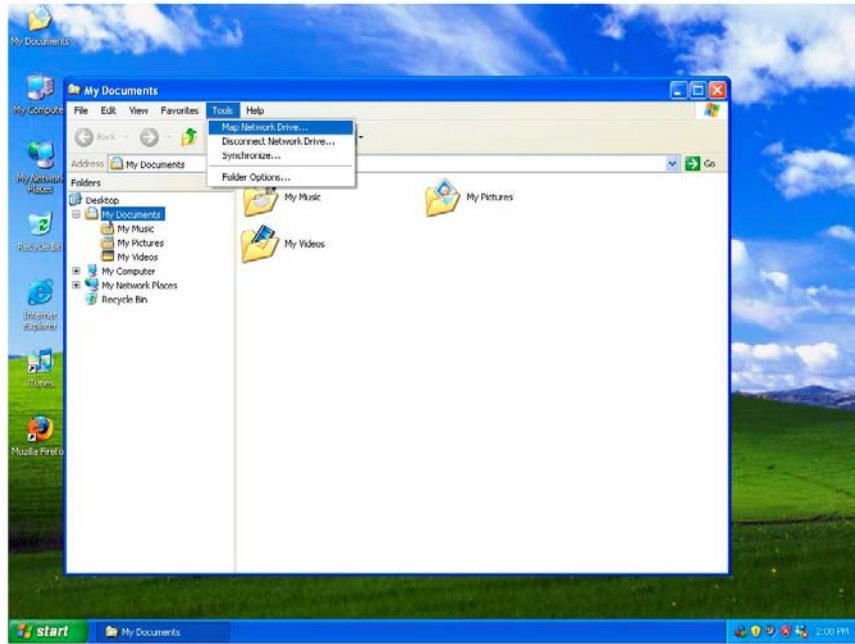


## Connect a drive from Windows Explorer:

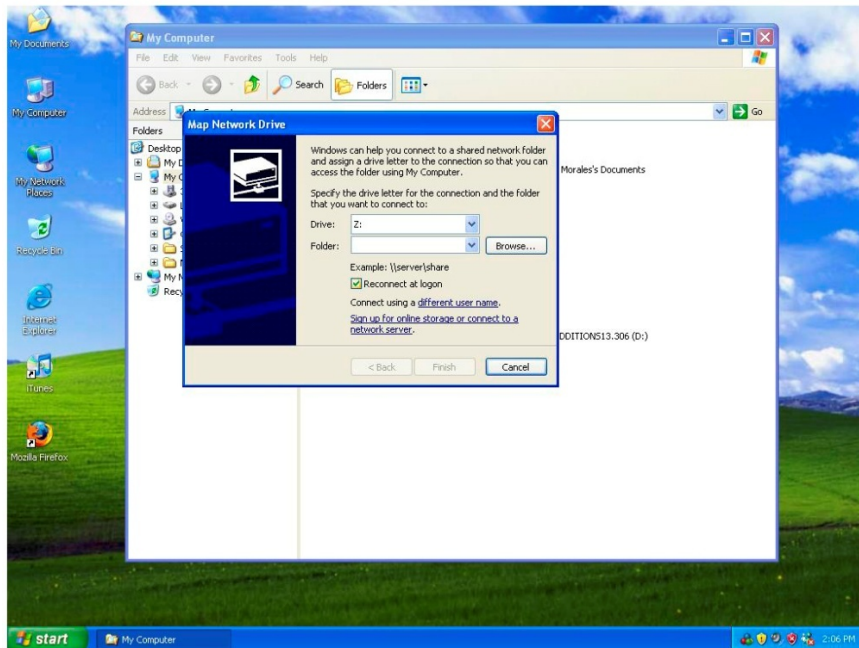
1. Click Start, All Programs, Accessories, Windows Explorer.



2. Windows Explorer will default to your My Documents folder, on the Tools menu, click Map Network Drive.



3. In the Drive box, click a drive letter.  
4. In the Folder box, type the UNC path for the server and shared resource in the following format: \\server name\share name. You can also click Browse to find the computer and shared resource.

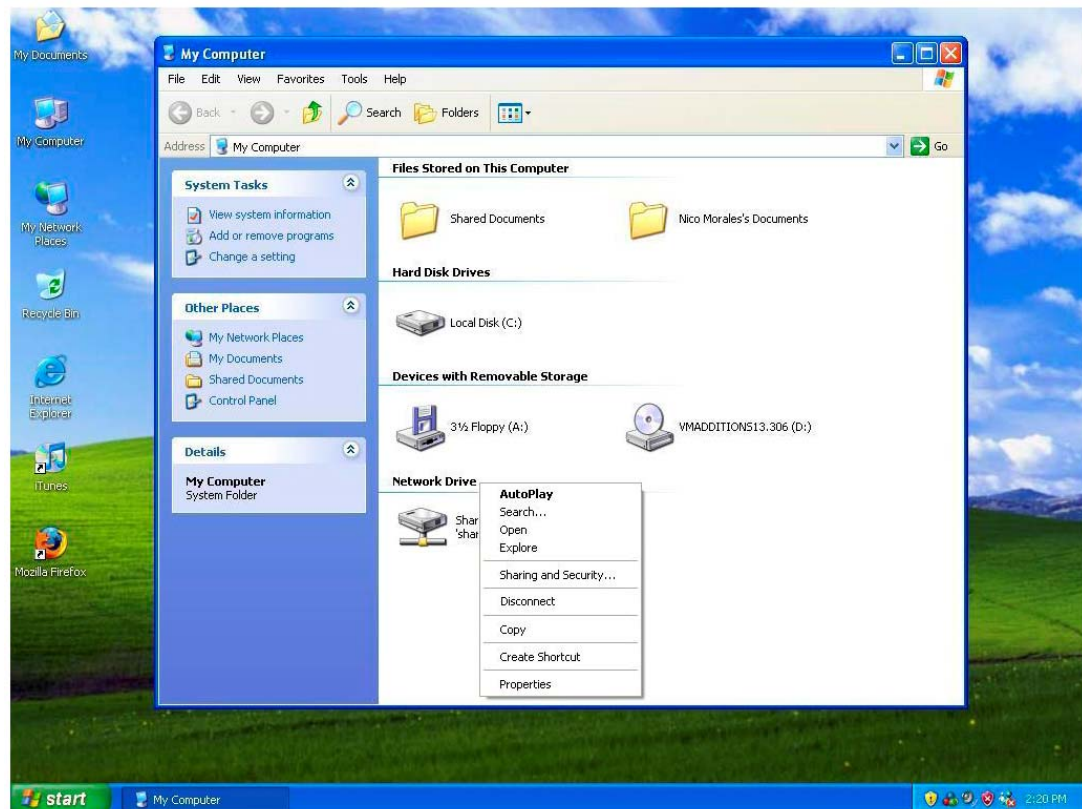


You can map shared drives and shared folders. When you access a shared drive or folder you can also access subfolders if you have the appropriate permissions. However, you cannot map a drive for a subfolder that is not explicitly configured as a shared resource.

Network drives are mapped by using letters starting from the letter Z. This is the default drive letter for the first mapped drive you create. However, you can select another letter if you want to use a letter other than Z.

**To disconnect a mapped network drive:**

1. Click Start, and then click My Computer.
2. Right-click the icon for the mapped drive.
3. Click Disconnect.



**Note:** When you disconnect from a mapped drive, you remove the mapped drive letter that you assigned to the shared resource. You can still access the resource from My Network Places.